

# A History Of Transfusion: The Australian Experience

---

Dr. Mark Cortiula  
Mölnlycke Healthcare



# Presentation Overview

---

- Phlebotomy Origins
  - Red Cross and Blood
  - Wartime origins of Australia's BTS
  - Post-war Civilian Service
  - Rise of ARCBS
-

# Bloodletting: A long tradition

---

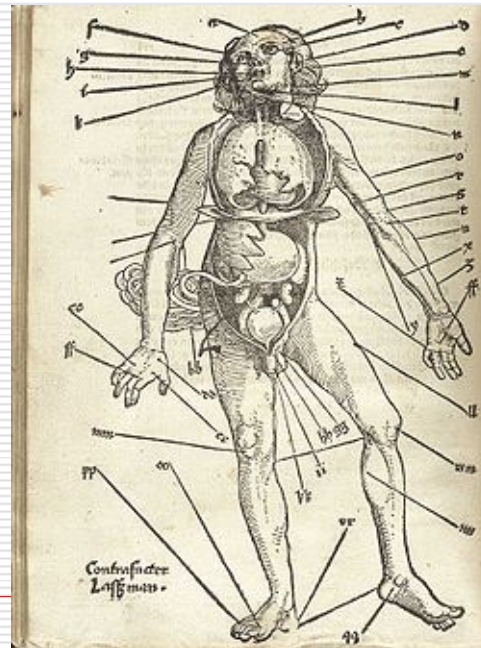
- Blood letting originated in ancient world



# Bloodletting: A long tradition

---

- Individuals bled for nearly every ailment imaginable in nearly any spot imaginable



# Bloodletting: A long tradition

---

- Wide variety of devices; Practice falls out of favour with advent of Germ Theory of Disease



# Blood and the Red Cross

---

- ❑ ARC founded nationally in 1914
- ❑ Percy Lane Oliver founds “London Blood Transfusion Service”—reality voluntary donor panel



# Voluntary blood panels- Australia

---

- Melbourne Hospital 1929
- Dr. Lucy Bryce- Honorary Director



# Collecting Blood for Battle

---

- Contingency planning for civil defence  
Includes provisions for blood donation
  - Medical Coordination committees  
directing emergency planning
  - Red Cross invited as way of getting  
Australians behind the war effort.
-

# Overcoming the hurdles

---

- ❑ Lewisohn-Sodium Citrate as anticoag
- ❑ Blood Storage



# BTS Australian Style

---

- ❑ Director General of Army FA Maguire authorises establishment of 25 blood banks
  - ❑ Goals:
  - ❑ Recruit and enrol donors
  - ❑ Develop country network to support urban areas at risk of bombing
-

# Post War World

---

- ❑ Transition military to civilian operation
- ❑ Robert J Walsh...NSW BB Director till 1966-Tradition of strong leadership



# Post War World

---

- ❑ Strong local leadership reflected in other states....Jack Morris...Robert Beal, Eric Shaw, Martin Davey, Gordon Archer
  - ❑ Directors accountable to their local state health departments....states provided bulk of funding....mitigate vs any move towards national scheme
-

# Post War World

---

- ❑ Transition military to civilian operation
- ❑ Grow country...going mobile
- ❑ Support Fractionation
- ❑ Rh (D) Project

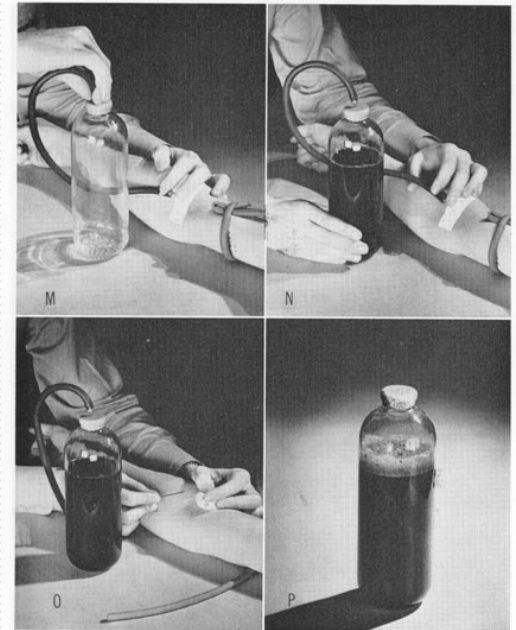


FIGURE 45.—Continued. M. Other end of donor set connected to plasma bottle by insertion of needle through stopper. N. Completion of donation. O. Detachment of needle from vein. P. Blood ready for transfusion. Bottle contains blood, sodium citrate, and glass beads.

# ARCBS: The National Frontier

---

- New blood paradigm
  - Enhanced accountability and efficiency
  - Creating a uniform playing field
-

# ARCBS: Going Full Circle

---

- Advent of ARCBS meant blood transfusion service once again returning to national origins
-